

Richard Face

Minister for Gaming and Racing

New South Wales

1995 - 2003

Regulating for Responsible Gambling

- The New South Wales Experience

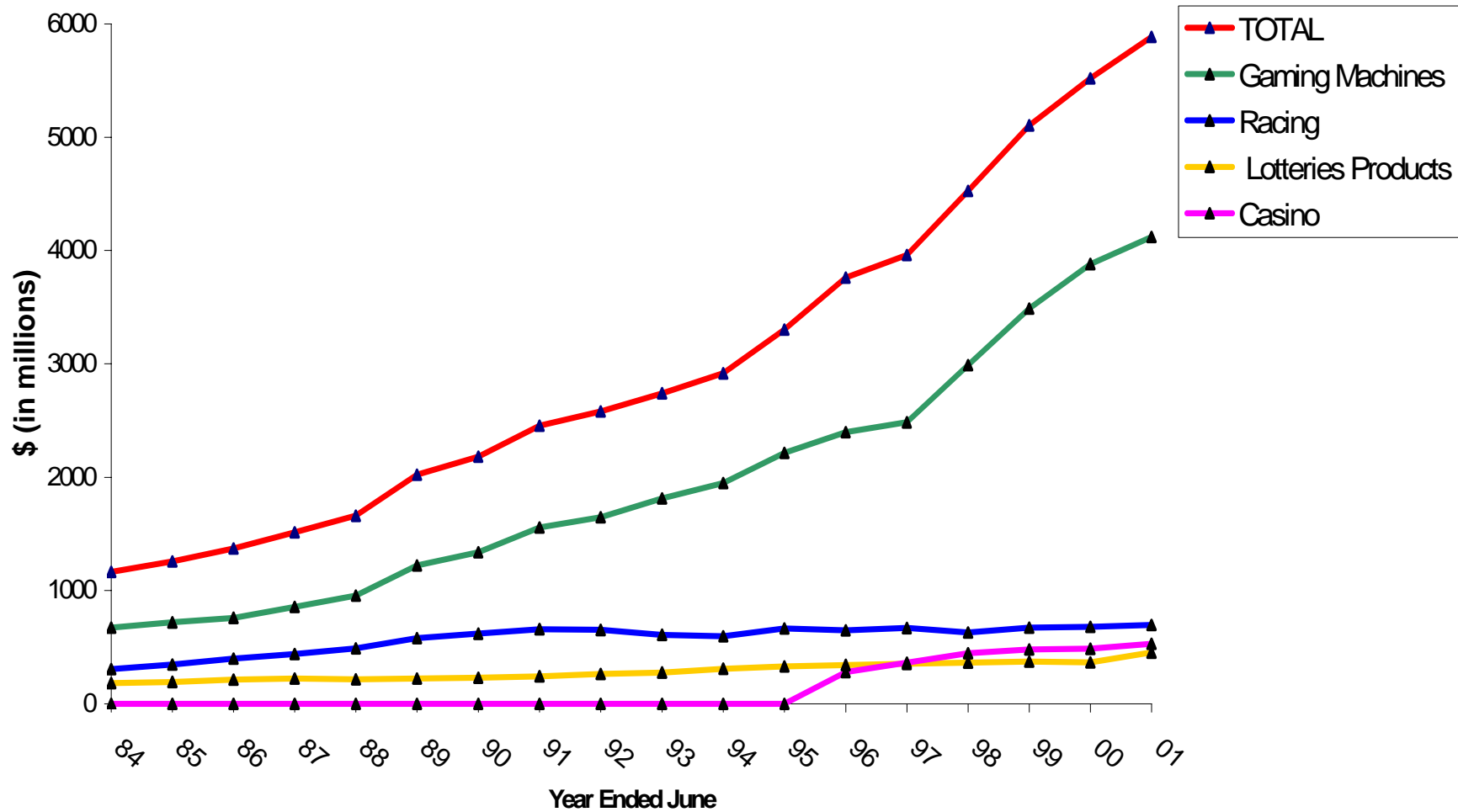
Liquor Harm Minimisation

- Strengthened legislation
- Court practice direction
- Training programs
- Point of sale material and signage
- Industry codes of practice

Liquor Harm Minimisation (Cont.)

- Industry education
- Compliance activities
- Police enforcement
- Liquor accords

NSW Gambling Expenditure 1983-4 to 2000-2001



Gambling Legislation Amendment (Responsible Gambling) Act 1999

- New objectives of the liquor and registered clubs acts
- Regulation making powers
 - Provision of credit for gambling
 - Courses of training
 - Advertising and promotions
 - Display of signs and notices

Gambling Legislation Amendment (Responsible Gambling) Act 1999 (cont.)

- More restrictions on minors gambling
- Self exclusion schemes
- Industry codes of practice
- Court ordered gambling counselling
- Corrective advertising or responsible gambling training for breaches

Gambling Harm Minimisation Objects

- Gambling harm minimisation
- Fostering responsible conduct of gambling activities

Player Information Brochures

- Venues to keep information brochures
- 12 different community languages
- Six different brochures
 - Two on problem gambling and responsible gambling
 - Three on the odds of different forms of gambling
 - One with summary information in community languages

Gambling Warning Notices

- Don't let gambling take control of your life
- Gambling can become addictive
- Excessive gambling can ruin lives
- Excessive gambling can destroy families and friendships
- Excessive gambling can lead to the loss of your home or other assets
- Excessive gambling can affect your health

Problem Gambling Notice

Is gambling a problem for you?

CALL G-line (NSW)

counselling service

1800 633 635

Counselling Sign for Main Entrance

IS GAMBLING A PROBLEM FOR YOU?

Are you in control of your gambling?

Do you gamble more than you can afford?

Do you borrow money to gamble?

Do you gamble to win back losses?

Does your gambling affect your family and friends?

FOR INFORMATION, COUNSELLING AND REFERRAL

CALL G-line (NSW)

24 hours a day, 365 days a year

1800 633 635

Cheque Cashing

- Venues prohibited from cashing
 - A cheque made payable to a third party
 - A cheque for more than \$400
 - More than one cheque to the same person on a single day
 - A cheque for a person who has previously presented a dishonoured cheque

Payment of Prize Money by Cheque

- Payment by cheque or EFT for prizes $> \$1,000$
- Players can choose to be paid by cheque for prizes $< \$1,000$

Automatic Teller Machines

- Venues prohibited from keeping ATMs and EFT terminals in gaming areas
- Provision for exemption, guidelines apply

Gambling Advertising

- Hotels and clubs initially prohibited from advertising that:
 - Encourages a breach of the law
 - Depicts children
 - Is false, misleading or deceptive
 - Suggests winning a prize is a likely outcome
 - Suggests improved social standing or financial prospects
 - Suggests that skill can influence the outcome
 - Depicts or promotes the consumption of alcohol
 - Is not conducted with decency, dignity and good taste
 - Does not include the g-line message

Gambling Advertising – later requirements

- No external advertising of gaming machines by hotels, clubs or the casino
- No external signs that indicate the availability of gaming machines

Gambling Inducements

- Prohibition of free or discounted liquor
- Prohibition of free gambling credits
- Prohibition on cash prizes for gaming machine promotions
- \$1,000 limit for value of any prize offered in a gaming machine promotion

Responsible Gambling Training

- Hoteliers, club managers and gaming staff must complete a board approved RCG course
- Department of Gaming and Racing and TAFE (NSW) develop standard course
- Six hours duration

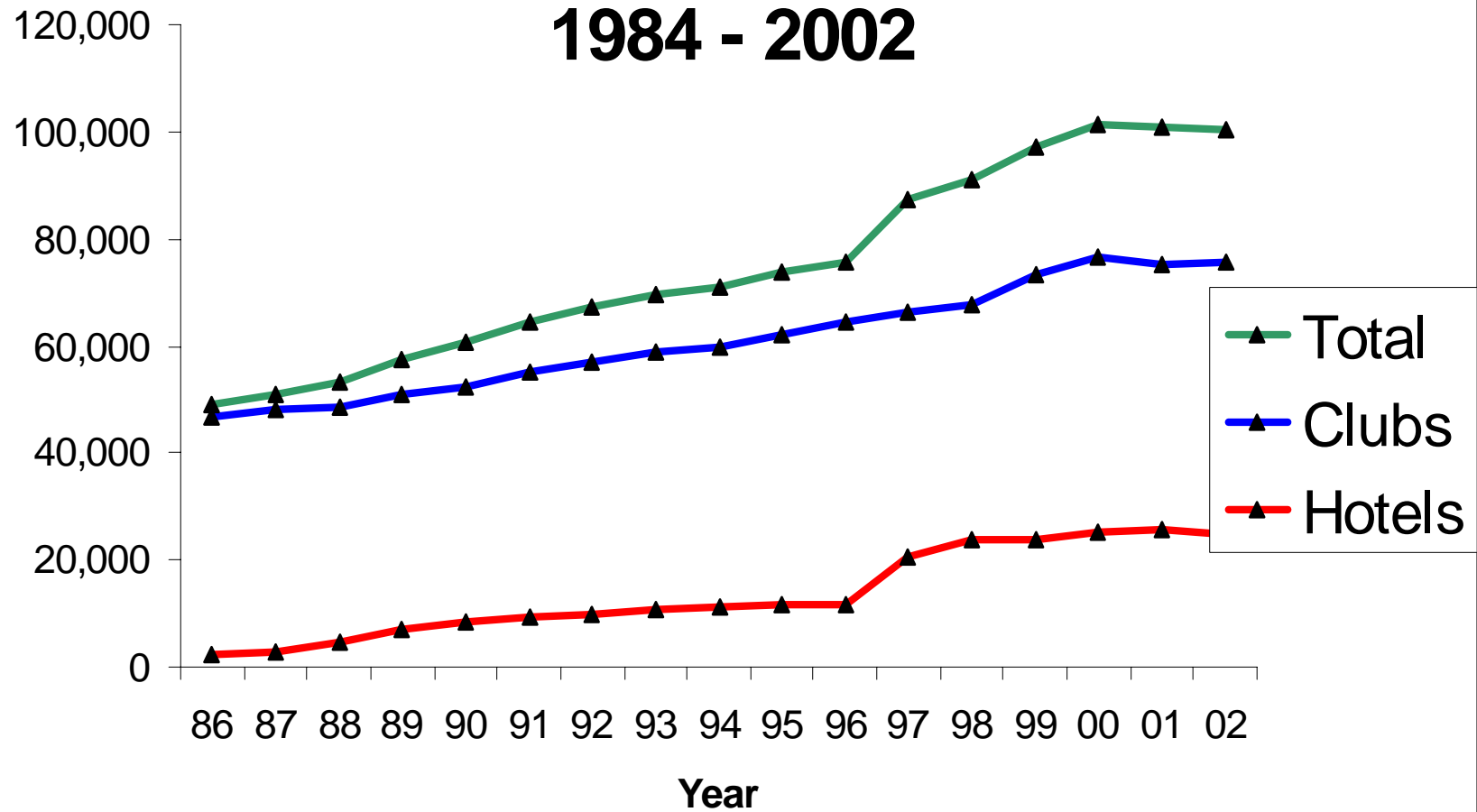
Self Exclusion Schemes

- Protection for hoteliers and clubs offering self exclusion schemes
- No civil or criminal liability for action taken under a scheme complying with regulations

Self Exclusion Schemes (cont.)

- Self exclusion schemes must provide for:
 - Preventing refusal of a request
 - Participant to give written undertaking
 - Participant can seek legal advice
 - Participant to be provided with information
 - Venue to ensure staff can identify participant
 - Venue to publicise scheme availability
 - Participant can't withdraw from scheme for 3 months
- Venues now required to enter into arrangements with an approved body to conduct a self-exclusion scheme

Gaming Machine Numbers 1984 - 2002



Stage 2 - Responsible Gambling Legislation

- Between March 2000 and April 2001:
 - Freeze on gaming machines in registered clubs
 - Freeze on gaming machines in hotels
 - Prohibition on gaming machines in shopping centres
 - Social impact assessment process
 - Removal of automatic entitlement to gaming machines for new hotel licences

Gaming Reform Act 2001

- Statewide and venue limits on gaming machines
- Transfer of poker machine entitlements
- Hardship scheme for additional poker machines
- Strengthened SIA process
- Mandatory shut-down of gaming machines

Caps on Gaming Machine Numbers

- Limit of 104,000 throughout NSW
- 78,020 in clubs
- 25,980 in hotels
- Each hotel to have no more than 30
- Each club to have no more than 450
- Clubs with >450 forced to reduce numbers

Transfer of Entitlements

- Transferred in blocks of 2 or 3
- One entitlement forfeited per transfer block
- Some exemptions to forfeiture
- Small clubs can apply for up to 10 'free' entitlements
- Country hotels can only transfer one block to the city per year
- Hotel entitlements trading at \$100K - \$130K
- Club entitlements trading at ~ \$30K

Hardship cases

- Clubs could apply to be exempt from the freeze on hardship grounds
- Hotels could apply for 'hardship gaming machines' to be allocated – for a limited time only

Social Impact Assessments

- Class 1 SIA required for up to 4 additional gaming machines
- Class 2 SIA required for more than 4 gaming machines

Class 1 SIA

- Details of responsible gambling measures
- Internal floor space
- For new venues – any schools, places of worship or hospitals in the vicinity

Class 2 SIA

- Number of machines and expenditure
- Median wage and salary
- Unemployment rate
- Population \approx 18 years
- Map
- Negative and positive social and economic impacts
- Net social and economic impact

Class 2 SIA (cont)

- Liquor Administration Board not to grant an SIA unless satisfied:
- Complies with legislation
- Gaming activities will be conducted responsibly
- For new venues – no schools, hospitals or places of worship nearby
- For Class 2 SIAs – not detrimental to local community

Review into Harm Minimisation Measures

- Counselling programs
- Education Schemes
- Community Services
- Industry Regulations
- Mandatory Training
- Promotions
- Player Reward Schemes
- Location of Teller Machines
- Arrangements with Counselling Services
- Player Information Brochures

NSW Alcohol Summit

- 26 – 29 August 2003
- www.alcoholsummit.nsw.gov

Richard Face

Minister for Gaming and Racing

New South Wales

1995 - 2003

Regulating for Responsible Gambling

- The New South Wales Experience